

Ludwig Boltzmann Gesellschaft Clinical Research Groups

Call 2022/23
Information for Applicants

Dr. Sherin Alias
on behalf of Dr. Neda Motamedi-Shad

Short Proposal Form

- Do not alter the provided form (sections are not to be removed, combined, deleted etc.)
- Do stay within the word counts of each section
- Character counts are intended WITHOUT SPACES
- Include references as footnotes (you can decide the format)
- Signatures: Sign electronically, whenever possible. Signatures do not all have to be provided on the same sheet (you can upload multiple copies of the Form, if necessary)

Short Proposal Form

- You CAN change Table 7 to landscape mode and also include text above or under the table (staying with the 10 page overall limit)

2.5. Expected results, clinical relevance/impact and novelty (level of innovation)

Table 7: Work packages/sub-projects and their expected results

No.	Work package/ sub-project title	Work Package/ Sub-Project Leader	m/f	Duration (months)	Start MM/YY	End MM/YY	Planned results
1							
2							
n							

Short Proposal Form

- You CAN delete the blue text and bullet points under each section

SHORT PROPOSAL

▲ 1. ABSTRACT (APPROX. HALF A PAGE/1500 CHARACTERS)

Please note: The international experts for the evaluation of your proposal are selected based on your statements in the abstract.

The concise summary must include the following points:

- *Initial situation, problem to solve, and motivation to carry out the clinical research group.*
- *Goals and level of innovation compared to the state of the art (level of technology/knowledge).*
- *Expected results and findings.*

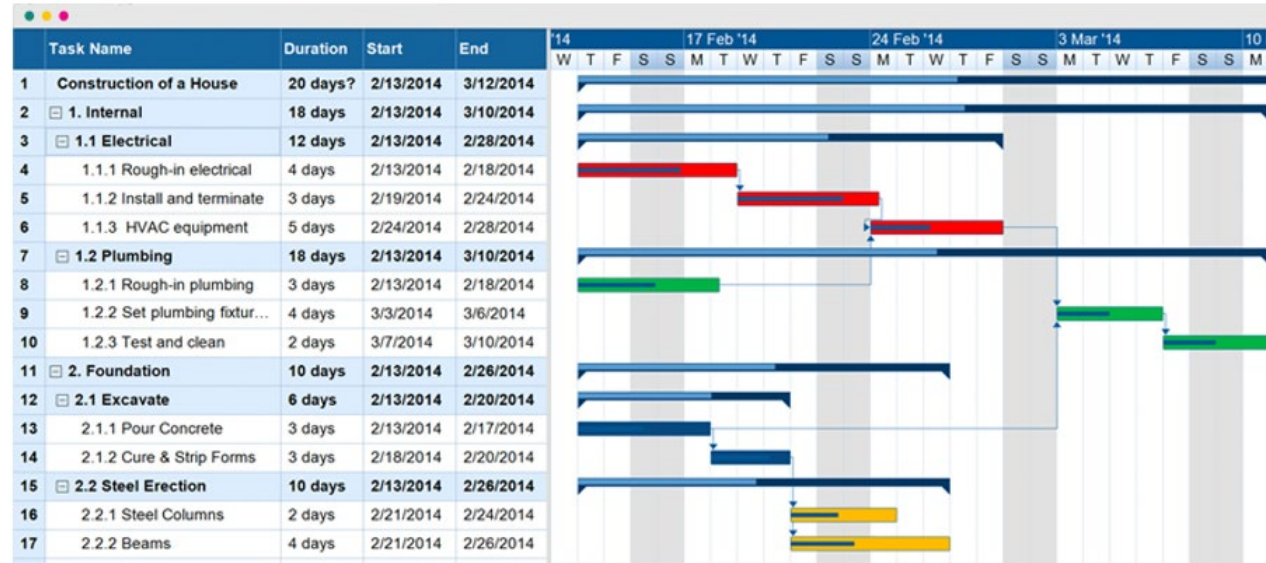
Short Proposal Form

- The GANTT chart is intended for 8 years, with more detail to be given for the first funding period
- Please note: In case of funding, the formal funding contract will be for the duration of the first funding period (first 4 years). If the outcome of the interim evaluation is successful, a separate funding contract will be signed for the second funding period.

2.6. Schedule/research project overview

Figure 1: Gantt chart of the research project

<INSERT GANTT CHART>



Attachments: Ethical declaration

Available

Fill in Section 2.9 in the Short Proposal Form and upload declaration in eCall

Not yet available

Fill in Section 2.9 in the Short Proposal Form and copy-paste into a document to upload on eCall

The ethical declaration can be provided during Full Proposal stage, or in well-founded cases, by June 30 2023 (see page 25 Call Specifications)

Attachments in eCall

← → ↻ 🔒 https://ecall.ffg.at/Cockpit/Cockpit.aspx?target=6078747&antrag=47274267


Information	
Jahresdaten	✓
Projektdaten	!
Projektdaten	✓
Projektleitung	✓
Projektstandort	✓
Datei-Anhänge	!
Partner	!
Kosten und Finanzierung	!
Abschluss	
Nachrichten	
Historie	

Formular Info

Bitte laden Sie hier die nötigen Dokumente gemäß der Definition

- Short proposal: PDF
- Kurze Ethikerklärung: PDF
- CVs des Hauptpersonals: PDF
- Optionale weitere Anhänge: z.B. Letters of Intent (je max. 1 S)

Datei-Anhänge

Short Proposal: *  only one attachment possible


✕

Ethikerklärung: *

✕

Lebensläufe des Hauptpersonals

CVs: *

[Optionalen weiteren Anhang erstellen](#)  upload more copies here, if necessary (signatures)

Attachments in eCall

← → ↻ 🔒 https://ecall.ffg.at/Cockpit/Cockpit.aspx?target=6078747&antrag=47274267

Information	
Jahresdaten	✓
Projektdaten	!
Projektdaten	✓
Projektleitung	✓
Projektstandort	✓
Datei-Anhänge	!
Partner	!
Kosten und Finanzierung	!
Abschluss	
Nachrichten	
Historie	

Formular Info

Bitte laden Sie hier die nötigen Dokumente gemäß der Definition

- Short proposal: PDF
- Kurze Ethikerklärung: PDF
- CVs des Hauptpersonals: PDF
- Optionale weitere Anhänge: z.B. Letters of Intent (je max. 1 S)

Datei-Anhänge

Short Proposal: *

×

Ethikerklärung: *

×

Lebensläufe des Hauptpersonals

CVs: *

←

mandatory annex. Create document with information from Section 2.9 of Short Proposal Form to upload here, if not available yet

Attachments in eCall

← → ↻ 🔒 https://ecall.ffg.at/Cockpit/Cockpit.aspx?target=6078747&antrag=47274267

Information	
Jahresdaten	✓
Projektdaten	!
Projektdaten	✓
Projektleitung	✓
Projektstandort	✓
Datei-Anhänge	!
Partner	!
Kosten und Finanzierung	!
Abschluss	
Nachrichten	
Historie	

Formular Info

Bitte laden Sie hier die nötigen Dokumente gemäß der Definition

- Short proposal: PDF
- Kurze Ethikerklärung: PDF
- CVs des Hauptpersonals: PDF
- Optionale weitere Anhänge: z.B. Letters of Intent (je max. 1 S)

Datei-Anhänge

Short Proposal: *
× [Durchsuchen](#)

Ethikerklärung: * ← **mandatory annex. Create document with information from Section 2.9 of Short Proposal Form to upload here, if not available yet**

× [Durchsuchen](#)

Lebensläufe des Hauptpersonals

CVs: * ← **mandatory annex.**

[Weiteren CV-Anhang erstellen](#)

[Optionalen weiteren Anhang erstellen](#)

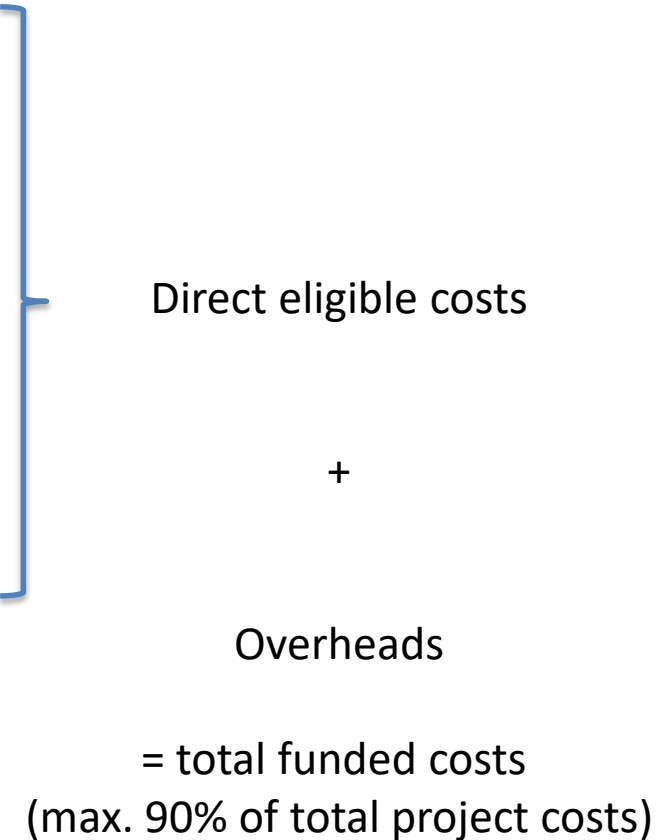
Gender aspects

At least 1/3 of all Heads (including the Head, the Deputy Head(s), and the work package/sub-project Leader(s)) must be female.

Do note that this rule does NOT comprise the Mentor!

Funding example: 1 Mio / year

- Salaries for personnel (see previous slide)
- Material costs
- Training
- Consulting services
- Smaller equipment
- Third party services
- Travel expenses
- 25 % of direct eligible costs as overheads



Funding example: 1 Mio / year

- Salaries for personnel (see previous slide)
- Material costs
- Training
- Consulting services
- Smaller equipment
- Third party services
- Travel expenses
- 25 % of direct eligible costs as overheads

Direct eligible costs	800 K Euro
+	+
Overheads	200 K Euro
= total funded costs (max. 90% of total project costs)	= 1 Mio Euro
<hr/>	
in-kind contribution (min. 10% of total project costs)	min 111.111 Euro
total project costs	min 1.111.111 Euro

In-kind contribution: Distribution

The guidelines do not define a given distribution of in-kind contributions among consortium members.

However, as salaries of Mentor, Head and Deputy Head are to be contributed in-kind, and this staff is to be employed by the Lead Institution, the Lead Institution will most likely cover a large proportion of the in-kind contribution.

Salaries of workpackage/sub-project leaders also need to be contributed in-kind, and this staff can also be employed at cooperation partners.

CRG staff overview

	Mentor (1)	Head (1)	Deputy Head(s) (1-n)	Workpackage/ Sub-project Leader (1-n)	Other staff (5-15)
Employed by Lead	x	x	x	x	x
Employed by Coop Partner	-	-	-	x	x
Salary funded	-	-	-	-	x
Salary in-kind	x	x	x	x	-
Time commitment (% FTE)	<i>not defined</i>	25	20	20	<i>not defined</i>

clinical staff can take rotational positions

Questions

Selected team members Ludwig Boltzmann Gesellschaft

- Prof. **Sylvia Knapp**, Vice president
- **Jürgen Busch**, Senior Manager
- **Kurt Wolfsberger**, Head of Finances and IT
- **Anneliese Inreiter-Weiss**, Head of Legal Affairs
- **Alias Sherin**, Information and Knowledge Manager